

## Professional 2.85 Gallon Ultrasonic Cleaner Skymen With Heater And Basket For Denture

### Our Product Introduction

for more products please visit us on [skymenultrasonic.com](http://skymenultrasonic.com)

#### Basic Information

- Place of Origin: China
- Brand Name: Skymen
- Certification: CE ROHS FCC SGS
- Model Number: JP-040S
- Minimum Order Quantity: 1 unit
- Price: Negotiation
- Packaging Details: 1 unit per box
- Delivery Time: In Stock
- Supply Ability: 8000 pcs per month



#### Product Specification

- Model: JP-040S
- Frequency: 40KHz
- Capacity: 2.85 Gallon
- Tank Size: 12\*9\*6 Inch
- Ultrasonic Power: 120W/240W
- Heating Power: 200W
- Material: SUS 304
- G.W: 8.4KG
- Highlight: 30min Timer Ultrasonic Parts Cleaners, Bench Top Ultrasonic Cleaner SUS304, SUS304 Ultrasonic Cleaning Equipment



#### More Images



## Product Description

Professional 2.85 Gallon Ultrasonic Cleaner Skymen With Heater And Basket For Denture

### PAY ATTENTION ON DETAILS



#### Insulated handle design

Anti-static and anti-high temperature, more secure



#### Stainless steel drain valve

One-half inch large drain valve, quicker to drain



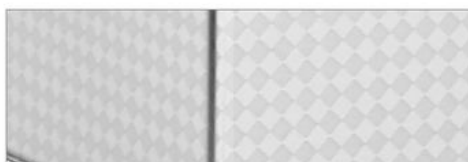
#### Cooling vents

Fast heat dissipation, protecting the circuit board and enhancing the service life



#### Heat - resistant power cord

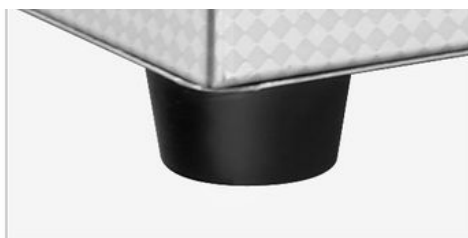
One-half inch large drain valve, quicker to drain



05

### Non-slip anti-shock pad

Non-slip, safer



06

### Safety switch

With ground insurance switch

07

### Stainless steel cleaning basket

Fine workmanship and durability



<b>Model</b>	<b>JP-040S</b>
<b>Ultrasonic Frequency</b>	40KHz
<b>Transducer Quantity</b>	4pcs
<b>Ultrasonic Power</b>	240W/120W
<b>Heating Power</b>	200W
<b>Tank Capacity</b>	10.8L/2.85Gallon
<b>Tank Size</b>	300*240*150mm
<b>Machine size</b>	380*290*280mm
<b>Packing size</b>	440*365*360mm
<b>Net weight</b>	7.6KG
<b>Gross weight</b>	8.6KG
<b>Time Range</b>	1~30 minutes
<b>Temperature Range</b>	Room temperature~80 /176
<b>Tank material</b>	SUS 304
<b>Tank thickness</b>	1mm
<b>Shell material</b>	SUS 201
<b>Shell thickness</b>	0.8mm
<b>Slope panel degree</b>	20°
<b>Drain Valve</b>	✓
<b>General switch</b>	✓
<b>Degas</b>	✓
<b>Semi-wave</b>	✓
<b>Lid</b>	✓
<b>Basket</b>	✓
<b>Voltage</b>	110V; 220V
<b>Plug</b>	European Plug; US plug; Austrslian Plug; British Plu
<b>Detergent suggestion</b>	No stronger acid or alkali
<b>OEM</b>	Yes
<b>OEM MOQ</b>	50pcs
<b>Origin</b>	Guangdong China
<b>Business category</b>	Manufacturer
<b>Lead time</b>	7 days after payment if order quantity is below 20pcs
<b>Payment term</b>	By cash; by credit card; by Paypal
<b>Warranty</b>	1 year

### Principle

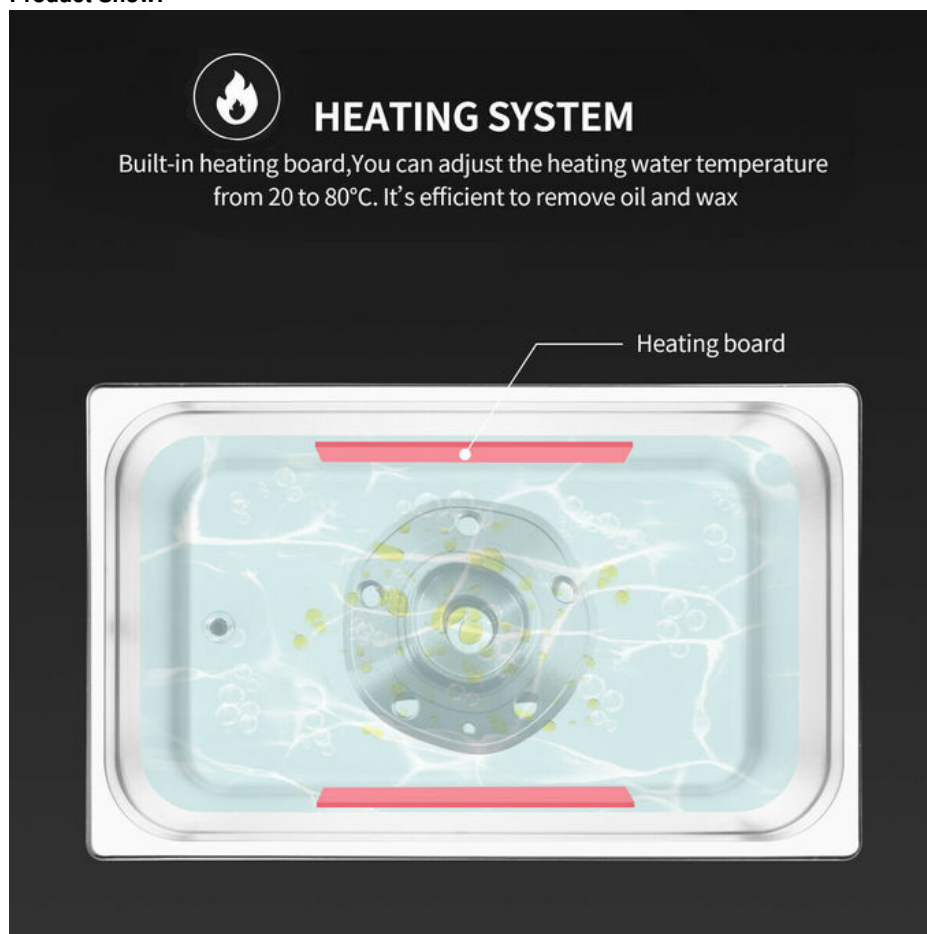
The principle of the ultrasonic cleaning machine is mainly to convert the sound energy of the power ultrasonic frequency source into mechanical vibration through the transducer, and to irradiate the ultrasonic wave into the cleaning liquid in the groove through the cleaning tank wall. Due to the radiation of the ultrasonic waves, the microbubbles in the liquid in the tank can be kept vibrated by the action of the sound waves. The adsorption of the dirt and the surface of the cleaning member is destroyed, causing fatigue damage of the dirt layer to be rejected, and the vibration of the gas type bubble scrubs the solid surface.

### Stainless Bench Top



Model	Capacity (L)	Tank Size (L*W*H)mm	Ultrasonic Power (W)	Heating Power (W)	Frequency (KHz)	Tank thickness (mm)	Material
JP-008	0.8	150*85*65	35	0	40	1	SUS304
JP-009	0.9	150*135*65	60	100	40	1	SUS304
JP-010T	2	150*165*100	60	100	40	1	SUS304
JP-020S	3.2	240*135*100	120	100	40	1	SUS304
JP-030S	4.5	300*150*100	180	200	40	1	SUS304
JP-031S	6.5	300*150*150	180	200	40	1	SUS304
JP-040S	10	300*240*150	240	200	40	1	SUS304
JP-060S	15	330*300*150	360	300	40	1	SUS304
JP-080S	22	500*300*150	480	500	40	1	SUS304
JP-100S	30	500*300*200	600	500	40	1	SUS304

### Product Show:



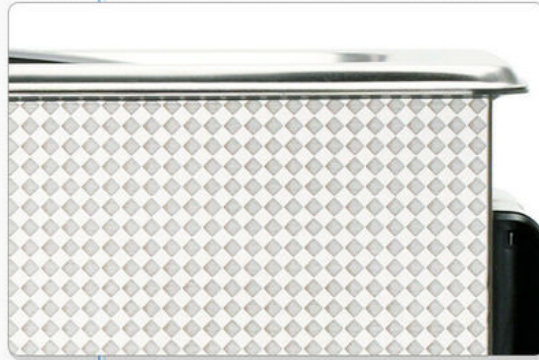


## Product details

1.

Printed surface stainless steel

fingerprint and dirt resisting



2.

SUS304 inner tank

non-welded stamped tank  
features corrosion and heat  
resisting

### 3.

#### Heat emission design

heat emission holes at the bottom increase working life



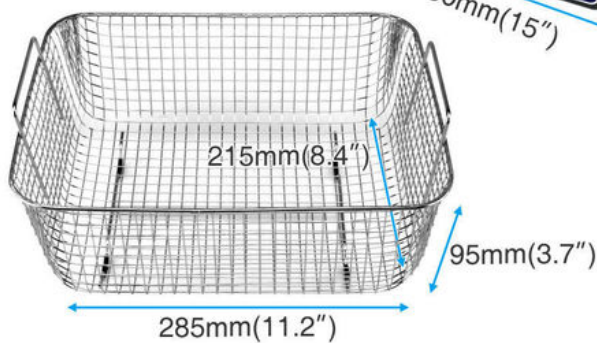
### 4.

#### Drain valve

The drain valve is made of high quality copper, corrosion-resistant and switch adjustable



Water should not cover it



## New Upgrade And Tilted Touch Control Pannel

Angle of 20 degrees tilted,user-friendly



### JP-040S 10L Product Show

Heating power  
**200W**

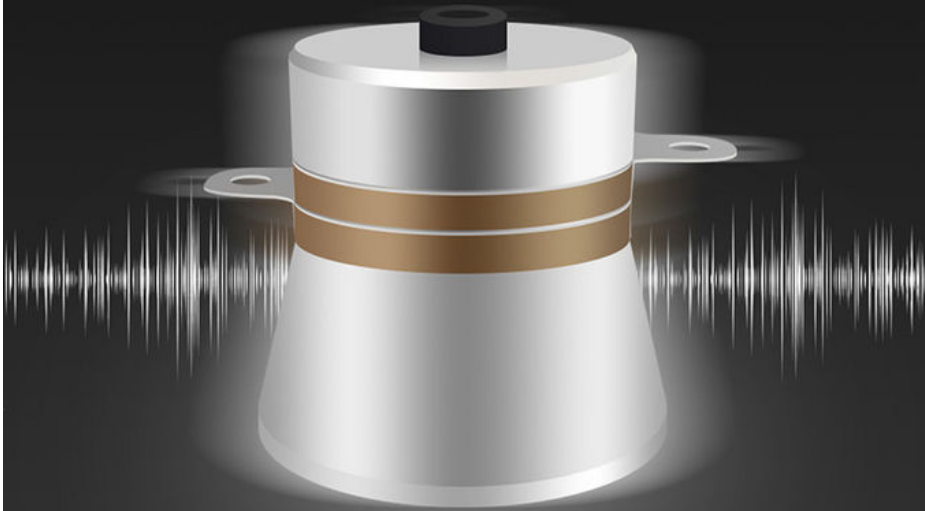
Ultrasonic power  
**240W**

Transducer  
**4 Pcs**



## INDUSTRIAL TRANSDUSER

Strong cleaning resistance, good durability with powerful cleaning effect.



Frequency  
**40kHz**

Ultrasonic power  
**240W**

Transducer  
**4 Pcs**

## HEATING SYSTEM

Built-in heating board, You can adjust the heating water temperature from 20 to 80°C. It's efficient to remove oil and wax



Heating temperature  
**20-80°C**



Heating power  
**200W**





#### Application Area:

### MULTIPURPOSE CLEANING

It's efficient for most of household items that could be used to clean. get the best cleaning effects with the least effort.



Glasses



Watchband



Jewelry



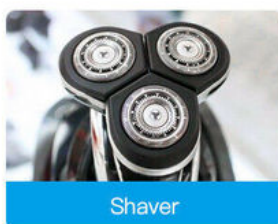
Tableware



Toothbrush



Denture



Shaver



Bottles&nipples



Nail Tools



Before



After



Before



After



Before



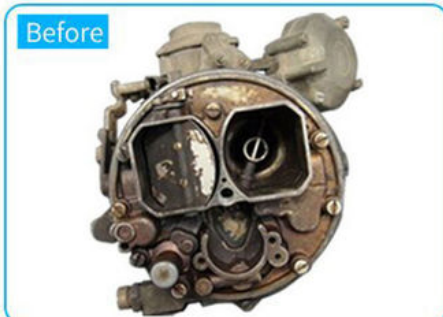
After



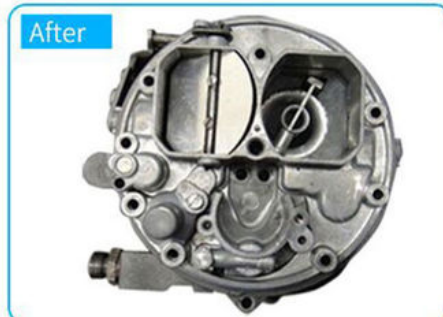
Before



After



Before



After



Before



After



Before



After





## COMPARISON OF CLEANING EFFECT





**Suitable for varieties of places**



Factory



Labs



Hardware store





## PRODUCT FEATURES

- 1 mechanical timing:  
The working time adjustable from 0-30 minutes or normal open mode.
- 2 mechanical control:  
mechanical control heater, 20-80 adjustable, temperature error within  $\pm 2$
- 3 high quality bath:  
High quality SUS 304 stainless steel punch forming bath with noise proof
- 4 anti-skid treatment:  
the machine is steady with the non-slip, shock-proof, anti-static, pressure-proof mats at the bottom
- 5 ceramic heater:  
New ceramic heater is stable and efficient
- 6 Humanized design, remarkable cleaning effect:  
Tank capacity over 6L with the drain valve; high cleaning efficiency, no harm to surface

**Industrial Ultrasonic Cleaning Machine**



Model	Capacity (L)	Tank Size (L*W*H)mm	Transducers (pcs)	Ultrasonic Power (W)	Heating Power (W)	Tank thickness (mm)	Frequency (KHz)
JP-120ST	38	500X300X250	12	600	1500	2	28/40
JP-180ST	53	500X350X300	18	900	1500	2	28/40
JP-240ST	77	550X400X350	24	1200	3000	2	28/40
JP-300ST	99	550X450X400	30	1500	3000	2	28/40
JP-301ST	99	800X300X400	30	1500	3000	2	28/40
JP-360ST	135	600X500X450	36	1800	4500	2	28/40
JP-480ST	175	700X500X500	48	2400	6000	2	28/40
JP-600ST	264	800X600X550	60	3000	6000	2	28/40
JP-720ST	360	1000X600X600	72	3600	9000	2	28/40
JP-1108ST	540	1000X900X600	108	5400	18000	2	28/40
JP-1144ST	960	1200X1000X800	144	7200	27000	2	28/40

#### Immersible Transducer Plate

Image:



Model	Plate Size (L*W*H)mm	Transducers (pcs)	Ultrasonic Power (W)	Generator (set)	Suitable tank (L)
JP-1006I	305*205*100	6	300	1	10~15
JP-1012I	355*305*100	12	600	1	30~40
JP-1018I	340*280*100	18	900	1	60~70
JP-1024I	430*280*100	24	1200	1	70~80
JP-1030I	460*370*100	30	1500	1	90~100
JP-1036I	550*450*100	36	1800	1	130~140
JP-1048I	600*450*100	48	2400	2	170~180

#### Immersible Transducer Tube

Image:



Model	Tube Size	Transducers	Ultrasonic Power	Generator	Length of wire
	(D*H)mm	(pcs)	(W)	(set)	(M)
JM-1003	57*180	3	150	1	1.5
JM-1006	57*300	6	300	1	1.5
JM-1012	57*550	12	600	1	1.5
JM-1018	57*750	18	900	1	1.5
JM-1024	57*1000	24	1200	1	1.5
JM-1036	57*1520	36	1800	1	

Immersible Transducer Plate/tube can be put in any tank, but it doesn't have heating function.

The price of tube is much higher than plate, Ultrasonic Tube is only used for special purpose, such as in Lab.



**SkyMen Technology Corporation Limited**



86-755-27094405



info@skymen.cc



skymenultrasonic.com

Floor 1st & 2nd, Building 3, Tanggang Taifeng Industrial Park, Dawangshan Community, Shajing Street, Bao'an District, Shenzhen